



**Codington Conservation District**  
 1720 4th St N E Suite #3  
 Watertown, SD 57201  
 (605) 882-4989 ext. 3  
 codingtoncd2@sdconservation.net

Follow us on Facebook!

**Help Us CONSERVE!**

We know our mailing list might be outdated. We want to hear from YOU!  
 Help us keep things current.  
 Newsletter is also offered by email.

**CODINGTON CONSERVATION DISTRICT**

**CUSTOM CRP**  
**CLIPPING SERVICE**  
**15 FT BATWING MOWER**



Ready to tackle overgrowth? We've got you covered!

**FIRST ACRE: \$250** **EXTRA ACRES: \$25**  
 Each

★ CONTACT US TO GET SCHEDULED ★  
**605-882-4989 ext. 3**

**SEEDS FOR SALE**

**SUPPORT CONSERVATION AT NO EXTRA COST!**

**ORDER TODAY:**  
**(605) 882-4989 ext. 3**

**QUALITY SEEDS:**

We partner with trusted suppliers like Millborn Seeds and Agassiz Seed & Supply to ensure you get the best seeds for your needs.

**SUPPORT CONSERVATION:**

Make a difference with every purchase through our district! Our partnership with Millborn Seeds and Agassiz Seed & Supply ensures that a portion of every sale goes towards local conservation projects. Enjoy high-quality seeds while helping our community thrive, all at no extra cost to you.



Codington Conservation District | 1720 4th St N E Suite #3 | Watertown, SD 57201

Fall 2024



**FOR LAND'S SAKE**

**OUR MISSION:**

The mission of the Codington Conservation District is to make available technical, financial and educational resources to ensure the conservation of and wise use of soil, water and related natural resources for the benefit of its residents.

**Now is the time to start planning for your 2025 Tree Plantings!**

**Grant Funding for Trees**

The Codington Conservation District has cost share assistance for those looking to renovate shelterbelts. You could receive up to 45% of the full project in funding.

The cost to the landowners to add or renovate a shelterbelt is often prohibitive. This is an option to enable the projects to move forward. As with any State of S.D. grant, this cost share will be available to landowners/operators who are not eligible for any other funding through government programs to plant trees. Cost share is not available for "farmstead only" plantings. All grants approved are obligated on a first come, first served basis, to those who qualify. Call 605-882-4989 ext. 3.

**USDA Programs for Trees**

There are currently cost share options through the CRP program for tree plantings, as well. You may be eligible for not only cost share opportunities, but to receive future payments on those trees. Call the Farm Service Agency to inquire about the CRP Program. Call 605-886-8202.

**Don't Remove Tree Tubes Too Soon**

*By: Dr. John Ball*



A common problem with tree tubes is that trees will sometimes fall over once the tubes are removed. Tree tubes protect seedlings from rabbits and deer (browsing and rubbing) as well as mechanical injury from weed eaters. They also provide a "mini-greenhouse" that improves the growing environment for the young trees resulting in better survival and growth.

The downside is the rapid terminal growth comes at the expense of diameter growth. The protective tubes limit swaying in the wind, an important trigger for diameter growth, so the trees in the tubes do not develop the proper taper. If the tubes are removed after the tree just begins to grow above the top, the slender stem will often bend completely over as it cannot support the top.

The solution is to either remove the tube while the tree is still small and not peeking out above the tube (though this eliminates the protection) or leave it in the tube until the tree's trunk is almost filling it and the canopy is far above it. As the tree increases in height above the tube, the trunk will sway and develop the necessary taper.

The worst time to remove the tube is just after the tree has branched out above the tube. These young branches are heavy since they now have room to expand but the trunk is still too slender to support it.



**District Board of Supervisors**

- Ken Bunde, *Chairman*
- Bonnie Oletzke, *Vice Chairman*
- Mike Paulsen, *Supervisor*
- Ben Schleusner, *Supervisor*
- Dan Kahnke, *Supervisor*
- Bradley Bunde, *Advisor*

**District Employees**

Deanna Kunkel, *District Manager*

**NRCS Employees**

- Ryan Mar, *District Conservationist*
- Linda Sumner, *Soil Conservationist*
- Eric Landmark, *Soil Conservationist*
- Levi Campion, *Compliance Specialist*
- Joe Mayrose, *PF Farm Bill Biologist*

**Board Meeting Schedule**

- January 7th - 9:00 AM
- February 4th - 9:00 AM
- March 4th - 9:00 AM

Public is welcome to attend.  
 Notices posted on USDA office door.

**THANK YOU!**

*The Codington Conservation District Supervisors and District Manager would like to thank all of our loyal customers! YOU are what keeps our business going. Let's keep putting Conservation On The Ground!*

## Tree Planting Info & Requirements

CCD plantings will not be completed for those unwilling or unable to meet the following requirements.

- If the future tree planting site has remnants of an old tree belt, or is sod, alfalfa, or in other ways unbroken ground, it must be followed by August 1st of the year prior to planting.
- If the future tree planting site currently has trees on it, the area needs to be cleared and the ground disked 2 falls (ie:2023, 2024) before a spring planting (in 2025) can be completed. This allows smaller roots left behind to decompose and helps prevent injury to tree planters or damage to our machinery.
- Corn, soybean, or other crop stubble needs to be disked the year prior to planting to give it a chance to decompose.
- **With any of the above, the site will need to be disked an additional 1-2 times the summer and fall prior and 1-2 times in the spring until it's a fine, garden soil like consistency. Roots seal better, have a better survival rate, and weed barriers go on better with a well worked area.**
- We recommend applying and incorporating Treflan prior to the last pass of disking. This helps with weed control.
- The land will need to be evaluated by the district office before a tree plan can be made and a planting scheduled.
- Trees need to be kept totally weed free. If you want to have a weed barrier installed please let us know.
- Trees will need to be well, but not overly, watered (2-3Xs per week the first year) for best survival and results.
- Cost-share may be available for participants of FSA Farm Program, or through NRCS or JRWDD.

## Youth Opportunities Coming Up

### Arbor Day Essay

Coming up this spring we have a couple of opportunities for students to get involved with conservation. Students in the 5th and 6th grade have the opportunity to write an essay or poem on the importance of Arbor Day and trees and why we celebrate Arbor Day in South Dakota. There are cash prizes for the top three places and each student that participates will get a free tree from the district. Entries are due at the Codington Conservation Office in March (Date TBD). Contact the office with any questions.

## Register Now!

**Don't miss this chance to learn more about soil health and hear from excellent speakers, including Keith Berns, Paul Jasa, Joe Breker, Dean Sponheim, and many more!**

**Between networking opportunities, demonstrations, inspirational stories, and in-depth instruction, no matter where you are on your soil health journey, this event has something to offer!**

**Learn more at**

[sdsoilhealthcoalition.org/  
soil-health-conference](https://sdsoilhealthcoalition.org/soil-health-conference)

## 2025 Soil Health Conference

**Jan. 15-16, 2025  
Ramkota Hotel  
and Event Center  
Watertown, SD**



## Rangeland Days: A Hands-On Learning Experience for Kids

The 40th annual Rangeland Days and 19th annual Soil Days brought together over 100 kids from across South Dakota for an exciting two-day event. Held in Watertown on June 12-13, this educational experience is designed to deepen students' understanding of natural resources and land management.

Among the participants was Karlie Kammerer, a home-schooled junior from Piedmont, who finds beauty in the small details of nature. She marvels at how slender blades of western wheatgrass and clusters of golden Alexander flowers contribute to a healthy ecosystem. Karlie has witnessed firsthand the benefits of her family's holistic ranching practices, which harmonize prairie plants, grazing cattle, and native wildlife. These practices are integral to her family's fourth-generation ranching legacy.



*Randi Tivis, left, Casey Wenzlaff and Karlie Kammerer discuss plant identification during Rangeland Days in Deuel County June 12. Kammerer was selected as South Dakota's delegate to the High School Youth Forum put on by the Society for Range Management.*

Armed with a plant identification guide, Karlie spent the event examining grasses and shrubs across the rolling hills of northern Deuel County. The contests, which see 4-H and FFA members evaluating land properties, soil, and plants, offer a comprehensive look at environmental stewardship. Krista Ehlert, a range specialist with South Dakota State University (SDSU) Extension, highlighted the importance of this education, noting, "This is really to help promote education on and about our most threatened national resource in the state: grasslands."

Participants, ranging from ages 8 to 18, compete in divisions that cover range, land (or soil), and homesite evaluations. They also display their knowledge through tabletop presentations. The hands-on approach not only enriches their understanding but also provides valuable insights into careers related to natural resources, which are crucial for the Northern Plains' economy.

The event's impact is also seen through former participants like Randi Tivis and Landon Wolter. Now working for NRCS, they returned to guide new participants. Tivis and Wolter led a group of scouts, teaching them how to identify various plant species and the fundamentals of rangeland judging. Wolter emphasized the importance of getting down in the grass, saying, "You're not really range judging if you don't have grass stains on your knees at the end of the day."



*Autumn Kunkel, 8, of Watertown looks on as SDSU Extension Range Specialist Krista Ehlert digs up a plant. Working with younger kids is a "kick in the pants," Ehlert said. "They're super fun and they're excited and curious and ask good questions."*

One of the newcomers, Lidia Dupraz, an incoming sophomore at Deubrook High School, found the day more enjoyable than she expected and earned first place in the Scouts range judging division. Across the pasture, other kids engaged in soil judging, where NRCS soil scientist Lance Howe instructed them on analyzing soil layers, runoff, and erosion. Howe provided practical tips on what to look for and how to assess soil health.

Rangeland Days continues to be a significant event, nurturing a new generation of environmental stewards. By learning about and engaging with grasslands and soil, these young participants are preparing to play a crucial role in preserving South Dakota's natural resources for the future.

*This article, along with accompanying photos, is adapted from an article by Janelle Atyeo, published in Tri-State Neighbor. Read the full article here: <https://tinyurl.com/mr2xce99>*

# Treatments to Begin Now

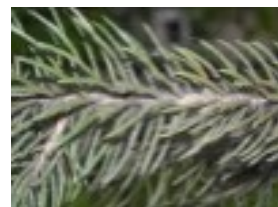
As recommended by Dr. John Ball, SDSU

More helpful information can be found here: <https://extension.sdstate.edu/tree-pest-alert>

- Mulching ornamental trees to keep soil warmer longer into fall and also keep winter soil temps from dropping too low that can kill tree roots.
- Treatment for Pine Wilt disease is cutting down the tree and burning the wood. DO NOT PILE IT! Pine Wilt disease only attacks the exotic pines. Our ponderosa pines are tolerant of the disease while Scotch and Austrian Pines are highly susceptible to the infection.
- Raking of any infested fallen apple fruit under your trees. This will help prevent apples diseases next spring with the codling moth. Insecticidal sprays can be applied in the spring as the apples are beginning to form. Do not spray while the trees are in bloom.
- The spruce spider mite is a cool season mite, so it is not active nor effectively treated during hot weather. However, the time is within the next few weeks. The



mites cause the damage in spring or fall but we see the bronzing and needle loss in the summer. Commercial applicators do the best job of managing the mites. Miticides containing Bifenazate or Acephate as the active ingredients are the most often used.



- A great way to get a jump start on broadleaf weeds is to have Casoron applied in the winter. Casoron is a granular chemical that is applied when the ground is froze. It helps control weeds like dandelions, thistle and kochia in the upcoming growing season for your tree belts —young and old.
- Once leaves have dropped, choose a nice fall day to check on your fabric in your plantings. A sharp hay knife will split the fabric easily by the trunks of the trees. Girdling WILL kill the tree as roots starve. The fabric has done its job once the trees have canopied.



# Tree Items



## Tree Tubes

Tree tubes are a hot seller lately. They are perfect for keeping deer, rabbits, and other rodents out of your newly planted trees. The tubes also produce a greenhouse effect on trees giving them a great head start. They are easy to install and worth your time. Each tube comes with a fiberglass stake, tube, and ties. We have 5' tubes on hand that cost \$10.00 each for the whole system. If you are planting a shelter belt through CRP ask about cost share on tubes!

## Plantskydd

If you have deer problems in your yard Plantskydd is your answer. It is 100% natural and can be used on everything from trees, shrubs, and flowers. It lasts 3-4 months in the summer, 6 months over the winter, and through any rain or snowstorm that we get. We have a variety of sprays and granular products to best suit your yard.

## Tree Gators

Tree Gators are great for keeping your trees watered with little effort from you. They can be installed in minutes with no tools. Each bag slowly releases water up to 9 hours, preventing run off and evaporation. Just fill the bag with water and your tree will be watered for days. We have two different types; one for evergreens and one for other trees, which is pictured. Each are \$25.00.

# Terex Utilities donates and plants trees



Terex Utilities recently demonstrated its commitment to environmental stewardship by donating and planting trees at two locations in Watertown. In addition to planting 15 Meyer spruce trees at their facility near Interstate 29, Terex's Sustainability Champion, Alicia Haich, collaborated with Deanna Kunkel, Manager of the Codington Conservation District, to identify a community site for additional plantings. Kunkel suggested Memorial Park at Lake Kampeska, a public space where everyone could benefit from the new greenery.

The Terex Sustainability Committee embraced the idea, leading to the planting of 20 trees in Memorial Park, including paper birch, river birch, autumn blaze maples, and Japanese lilac trees. Kunkel noted that the variety of trees would be beneficial to the park's landscape. This project aligns with Terex's mission to promote sustainability and contribute to the well-being of the communities where they operate.

# New website helps consumers connect with local producers

PIERRE, SD – It's no secret that consumers are hungry for safe, healthy, sustainable, locally grown food. South Dakota's small scale and urban producers are stepping up to the plate by learning how to improve their land, their environment, and their communities while producing nutritious food. Now the South Dakota Soil Health Coalition and its partners have launched a new website to help local producers and consumers find each other.



The South Dakota Fresh Connect website ([www.sdfreshconnect.com](http://www.sdfreshconnect.com)) allows producers and farmers markets to create free accounts and public profiles to list their available products on a map. Consumers, restaurants, markets, and other organizations can also create free accounts to locate the nearest sources for the goods they need and directly contact the producers. Users can narrow their searches by location and specific products.

"South Dakota Fresh Connect is the ultimate platform for connecting South Dakota consumers with our local, farm-fresh produce," said SDSHC Soil Health Technician Chris Goldade, who also owns and operates Flat Rock Farms near Westport, SD. "The detailed farm profile allows us to showcase our unique growing practices and the quality of our offerings. With free search capabilities, anyone can easily find our contact information and discover the freshest, healthiest food available. By using Fresh Connect, we can introduce new, exciting products to our local residents and support a thriving local food economy."

The website will also list resources and educational opportunities to help small scale and urban farmers improve their soil, drought resilience, and operational sustainability.

SDSHC is able to provide the South Dakota Fresh Connect website with assistance from the U.S. Department of Agriculture Natural Resources Conservation Service through the Intensifying Soil Health Knowledge and Implementation of Urban Agriculture Project. To learn more about the website and create a free account, visit [www.sdfreshconnect.com](http://www.sdfreshconnect.com). To learn more about the South Dakota Soil Health Coalition and its mission to improve the state's soils and communities, visit [www.sdsoilhealthcoalition.org](http://www.sdsoilhealthcoalition.org) or contact the Coalition at [sdsoilhealth@gmail.com](mailto:sdsoilhealth@gmail.com) or 605-280-4190.

# Check your plantings For fabric girdling!

By: Dr. John Ball

Dr. John Ball had another call to a young windbreak (about 12-year old trees) where some of the pines in the row were stunted and dying. "Once I pulled the sod off the top of the fabric, the fabric was found to be imbedding in the stunted trees (but not the healthy ones)." As mentioned several times in the Update this year, once soil and litter covers the fabric, it will not deteriorate. If only narrow slits were made when the seedlings were pulled through the fabric at planting, sometimes the fabric will not yield as the tree trunks expand and instead the fabric becomes imbedded. Eventually this can cut off the movement of food from the needles to the roots. This will kill the tree as the roots starve.



# Soil - Don't Till it, Feed it!

Keep Soil Covered as much as possible Residue saves on next year's fertilizer costs Grazing uses residue as forage & builds soil health.

## Removing residue removes nutrients.

"A ton of dry harvested corn residue contains 17# of nitrogen, 4 # of phosphorus, 34# of potash & 3 # of sulfur. It could add up to \$32.61 of fertilizer!"

- Soil Health Coalition -



**TREE PLANTING SERVICES**

- Hand Plants**
- ▶ Deciduous Bareroot - \$3.00 each
  - ▶ Conifer Bareroot - \$3.00 each
  - ▶ Conifer Plugs - \$3.25 each
  - ▶ Deciduous (25) - \$65.00 per bundle
  - ▶ Conifers (25) - \$65.00 per bundle
- Full payment required before plants are ordered.**
- District Hand Planting**
- ▶ Crew to hand plant - \$10.00 per bareroot tree (includes the price of the tree). \$14.00 per potted tree.
- Tree Planting**
- ▶ All trees & shrubs \$0.65 per linear foot
  - ▶ \$400 minimum charge
  - ▶ 2.50 mile delivery
- Tree Fabric**
- ▶ \$0.90 per linear foot
  - ▶ \$400 minimum charge
  - ▶ 2.50 mile delivery
- Rotary Tilling & Discing**
- ▶ \$150 for the 1st hour, \$80 per hour thereafter. This includes operator/tractor/tiller rental charge or disc.

**TREE SITE WEED CONTROL**

- Tree Fabric & Staples**
- ▶ 6' x 500' per roll - \$225
  - ▶ 4' x 300' per roll - \$80
  - ▶ 3' x 300' per roll - \$65
  - ▶ 4' x 4' squares - \$4.50 each
  - ▶ Also sold by the foot for \$0.60 ft.
  - ▶ Staples 500 each in box - \$110
  - ▶ Per Staple - \$0.25 each
- Rotary Mowing**
- ▶ \$150 per hour for 1st hour, \$80 per hour thereafter.
- CRP Clipping with Batwing Mower**
- ▶ \$250 for 1st acre, \$25 per acre after if scheduled.

**Tree stock is not guaranteed.**

**TREE TUBES**

- We can now get 5' tree tubes. We also carry 5' fiberglass stakes!**
- ▶ 5' tree tubes - \$5.00
  - ▶ 5' fiberglass stakes - \$5.00
  - ▶ Installation of tubes on machine plantings - \$2.00 plus the cost of the tube.

**RENTAL EQUIPMENT**

- John Deere 20' No-Till Drill\*\***
- ▶ \$200 minimum charge
  - ▶ \$15 per acre
  - ▶ \$100 delivery fee or pick up from shed for free.
- \*\*There will be a \$100 charge added to your bill if the drill is not cleaned out when returned.\*\***
- Contact Deanna for all your rental needs: 605-880-5621**

**CUSTOM DRILLING WITH OPERATOR**

- The Codington County Conservation District provides a 15 ft. no-till Great Plains grass seeding drill which is ideal for seeding alfalfa, cover crops and the fluffy seed mixtures called for on CRP acres.
- Great Plains 15' Grass Drill**
- ▶ \$300 minimum charge
  - ▶ \$30 per acre
  - ▶ \$100 delivery fee
  - ▶ **Note: Owner must purchase seed from the district for use of this drill.**

**TREE SITE GRASS SEEDING**

- The Codington County Conservation District offers grass seeding in tree sites as a method of weed control.
- ▶ \$400 up to 5 acres, \$40 an acre after, plus cost of seed.
  - ▶ **Seed must be purchased from the district.**

**SEED SALES**

- The Codington County Conservation District is a seed dealer for Renovo and Agassiz Seed.
- ▶ The District will order the seed for the customer upon request and full payment.
  - ▶ By purchasing seed from the district you are helping to support your local district.

**FRUIT POLLINATION**

Plant two or more varieties close by and get more fruit!

**HOW TO PAIR APPLES**

The best way to ensure a productive apple crop is to provide adequate cross pollination. You can achieve this by planting two or more varieties together. Use our apple chart to help make the best selection.

	Cornell Red	Cortland	Fireside	Frostbite™	Haralred*	Haralson	Honeycrip	Honeygold	McIntosh	Northwest Greening	Red Regent	SnowSweet*	State Fair	Sweet Sixteen	Yellow Transparent	Zestar!*	Chestnut Crabapple
Cornell Red		✓	✓	✓	✓	✓	✓	✓	✓	✓	✓	✓	✓	✓	✓	✓	✓
Cortland	✓		✓	✓	✓	✓	✓	✓	✓	✓	✓	✓	✓	✓	✓	✓	✓
Fireside	✓	✓		✓	✓	✓	✓	✓	✓	✓	✓	✓	✓	✓	✓	✓	✓
Frostbite™	✓	✓	✓		✓	✓	✓	✓	✓	✓	✓	✓	✓	✓	✓	✓	✓
Haralred*	✓	✓	✓	✓		✓	✓	✓	✓	✓	✓	✓	✓	✓	✓	✓	✓
Haralson	✓	✓	✓	✓	✓		✓	✓	✓	✓	✓	✓	✓	✓	✓	✓	✓
Honeycrip	✓	✓	✓	✓	✓	✓		✓	✓	✓	✓	✓	✓	✓	✓	✓	✓
Honeygold	✓	✓	✓	✓	✓	✓	✓		✓	✓	✓	✓	✓	✓	✓	✓	✓
McIntosh	✓	✓	✓	✓	✓	✓	✓	✓		✓	✓	✓	✓	✓	✓	✓	✓
Northwest Greening	✓	✓	✓	✓	✓	✓	✓	✓	✓		✓	✓	✓	✓	✓	✓	✓
Red Regent	✓	✓	✓	✓	✓	✓	✓	✓	✓	✓		✓	✓	✓	✓	✓	✓
SnowSweet*	✓	✓	✓	✓	✓	✓	✓	✓	✓	✓	✓		✓	✓	✓	✓	✓
State Fair	✓	✓	✓	✓	✓	✓	✓	✓	✓	✓	✓	✓		✓	✓	✓	✓
Sweet Sixteen	✓	✓	✓	✓	✓	✓	✓	✓	✓	✓	✓	✓	✓		✓	✓	✓
Yellow Transparent	✓	✓	✓	✓	✓	✓	✓	✓	✓	✓	✓	✓	✓	✓		✓	✓
Zestar!*	✓	✓	✓	✓	✓	✓	✓	✓	✓	✓	✓	✓	✓	✓	✓		✓
Chestnut Crabapple	✓	✓	✓	✓	✓	✓	✓	✓	✓	✓	✓	✓	✓	✓	✓	✓	

**PEARS**

Pears also need a neighboring crop for cross pollination. Use our chart to select a good match.

Variety	Compatible with
<b>Early Gold</b>	Golden Spice, Parker, Patten, Seckel, Summercrisp, Ure
<b>Golden Spice</b>	Early Gold, Parker, Patten, Seckel, Summercrisp, Ure
<b>Gourmet</b>	Early Gold, Golden Spice, Parker, Patten, Seckel, Summercrisp, Ure
<b>Luscious</b>	Early Gold, Golden Spice, Parker, Patten, Seckel, Summercrisp, Ure
<b>Parker</b>	Early Gold, Golden Spice, Patten, Seckel, Summercrisp, Ure
<b>Patten</b>	Early Gold, Golden Spice, Parker, Seckel, Summercrisp, Ure
<b>Seckel</b>	Early Gold, Golden Spice, Parker, Patten, Summercrisp, Ure
<b>Summercrisp</b>	Early Gold, Golden Spice, Parker, Patten, Seckel, Ure
<b>Ure</b>	Early Gold, Golden Spice, Parker, Patten, Seckel, Summercrisp

**PLUMS & CHERRIES**

**PLUMS**

Pollination with plums can be tricky. Unlike apples, simply growing two different varieties that flower at the same time does not ensure fruit production. As a rule of thumb, Toka will work best but check our chart to make sure you have a compatible match.

Variety	Compatible with
<b>BlackIce® Plum</b>	Waneta, Toka, Superior
<b>Mount Royal Plum</b>	Self-fruitful and does not need another plum
<b>Superior Plum</b>	Toka, BlackIce®
<b>Toka Plum</b>	BlackIce®, Waneta, Superior
<b>Waneta Plum</b>	Toka

**CHERRIES**

Black Tartarian requires Bing or Stella. Bing requires Black Tartarian or Stella. All others are self-fruitful and will produce fruit by themselves.

**Join us on March 15th, 2025, for a Fruit Tree Trimming Training led by Dr. John Ball!**

Stay tuned to our Facebook page for more details, or contact our office if you're not on Facebook.



# TREE PROTECTION

Tree Protection & Accessories		
# of Items	Item:	Price Per Item
	5' Tree Tubes	\$5.00
	Fiberglass Stakes (for tree tubes)	\$5.00
	Fabric by the Roll 6'x500'	\$225.00
	Fabric by the Foot 6'W	\$0.60
	Fabric by the Roll 4'x300'	\$80.00
	Fabric by the Foot 4'	\$0.45
	Fabric by the Roll 3'x300'	\$65.00
	Fabric by the Foot 3'	\$0.35
	Fabric Squares 4x4 (includes 5 staples)	\$4.50
	10" Fabric Staples - box of 500	\$110.00
	10" Fabric Staples	\$0.25/each

Miscellaneous Total: \_\_\_\_\_

### TREES ARE PERISHABLE - PICK UP PROMPTLY!

*Plant bareroot trees no later than May 31st*

Root systems need to be established before hot summer weather!

**Tree stock is NOT guaranteed.**

### All orders require full prepayment

*All prices are subject to change without notice.*

*Nursery stock is subject to change based on availability.*

*Tree orders are not able to be cancelled once placed.*

### PLEASE NOTE:

Bareroot & Machine Planting orders should be returned ASAP for BEST AVAILABILITY

***FINAL date orders will be accepted is January 31st, 2025***

Minimum order of 5 plants per species when ordering bareroot trees & conifers

***Replants on machine planting (1st year) are \$2.00 each***

## 2025 ORDER FORM

**Customer:** \_\_\_\_\_

**Billing Address:** \_\_\_\_\_

**City, State, & Zip:** \_\_\_\_\_

**Phone:** \_\_\_\_\_

**Email:** \_\_\_\_\_

**Date:** \_\_\_\_\_

# DISTRICT SERVICES

<b>Tree Planting</b>	\$0.65/ft / \$400 minimum charge
<b>Fabric</b>	\$0.90/ft / \$400 minimum charge
<b>Hand Auger Rental</b>	\$50.00 per day
<b>No-Till Drill Rental</b>	\$15.00 per acre / \$200 minimum charge \$100 delivery/pickup fee <i>(You can pick up at the shed for no charge)</i>
<b>Custom Drilling w/ Operator</b>	\$30.00 per acre <i>\$100 Delivery Charge</i> <i>\$300 Minimum Charge</i>

# SEEDS



ORDER FORM TOTAL	
Tree Total	
Conifer Total	
Fruit Total	
Plant Kits Total	
Tree Protection Total	
Subtotal	
Sales Tax 6.2%	
<b>TOTAL</b>	<i>Full payment due with order</i>

**THANK YOU!**

**Codington Conservation District**  
1720 4th St NE, Suite #3  
Watertown, SD 57201  
605-882-4989  
codingtoncd2@sdconservation.net



**2025 COMPLETE ORDER FORM**

# TREES

Bareroot Shrubs 3-6' Spacing <i>\$3.00 Each Barefoot   \$65 Bundle (25 per bundle)</i>	
QTY	Item:
	American Highbush Cranberry
	American Black Current
	American Hazelnut
	Black Chokeberry (Aronia, Black)
	Blue Artic Willow
	Buffaloberry
	Caragana
	Chokecherry, Amur
	Chokecherry, Common
	Chokecherry, Schubert
	Common Lilac
	Cotoneaster, Centennial
	Cotoneaster, Peking
	Diamond Willow
	Elderberry, Common
	False Indigo
	Flame Willow
	Golden Currant
	Hansen Hedge Rose
	Honeysuckle, Freedom
	Honeysuckle, Hawkeye
	Honeysuckle, Tatarian
	Juneberry
	Nanking Cherry
	Nannyberry
	Redosier Dogwood
	Russian "Regal" Almond
	Sand Cherry
	Sandbar Willow
	Silverberry
	Sumac, Skunkbush
	Sumac, Smooth
	Villosa Lilac
	White Lilac
<b>TOTAL:</b>	

Tall Trees 8-12' Spacing <i>\$3.00 Each Barefoot   \$65 Bundle (25 per bundle)</i>	
QTY	Item:
	Amur Maple
	Apricot
	Basswood (American linden)
	Black Cherry
	Black Walnut
	Boxelder
	Bur Oak
	Cottonwood, Native
	Cottonwood, Hybrid Male (Cottonless)
	Fireberry (Roundleaf) Hawthorn
	Freeman, Maple
	Golden Willow
	Green Ash
	Hackberry
	Harbin 'McDermand' Pear
	Hawthorn Homestead
	Hickory, Shagbark
	Honeylocust, Thornless
	Kentucky Coffee Tree
	Laurel Leaf Willow
	Little Leaf Linden
	Northern Catalpa
	Ohio Buckeye ( <b>don't plant near pasture</b> )
	Peachleaf Willow
	Quaking Aspen
	River Birch
	Russian Olive
	Silver Maple
	Swamp White Oak
	White Poplar
<b>TOTAL:</b>	

Small to Midsize 6-12' Spacing <i>\$3.00 Each Barefoot   \$65 Bundle (25 per bundle)</i>	
QTY	Item:
	Crabapple, Midwest
	Crabapple, Red Splendor
	Crabapple, Siberian
	Plum, American
<b>TOTAL:</b>	

Potted Hardwood			
QTY	Item:	Tree	Price Per Tree
	Aspen, Quaking 1 gal.	30"	\$20.00
	Maple Freeman 1 gal.	36"	\$20.00
<b>TOTAL:</b>			

Tall Bareroot			
QTY	Item:	Tree	Price Per Tree
	Cottonwood, Hybrid Male TALL	3-4'	\$8.00
	Maple, Silver	3-4'	\$8.00
<b>TOTAL:</b>			

## BENEFITS OF TREES

### Trees help clean our air.

They remove pollutants from the atmosphere, improving air quality.

### Trees provide much-needed cooling.




Trees lower surface and air temperatures by providing shade and releasing water vapor into the air through their leaves.

### Trees help is save energy.

When planted properly in a yard, a tree can either shade a home or protect it from winter winds—reducing energy costs by up to 20%.

Ornamental Trees - Special Order Bare Root			
Qty	Item:	Tree HT	Price per Tree
	Buckeye, Autumn Splendor	5' & up	\$50.00
	Buckeye, Ohio	5' & up	\$50.00
	Honeylocust, Northern Acclaim	5' & up	\$50.00
	Ivory Silk Japanese Lilac Tree	5' & up	\$55.00
	Kentucky Coffeetree	5' & up	\$50.00
	Linden, Redmond	5' & up	\$60.00
	Maple, Autumn Blaze	5' & up	\$50.00
	Maple, Fall Fiesta Sugar	5' & up	\$50.00
	Maple, Tatarian Hot Wings	5' & up	\$55.00
	Oak, Heritage	5' & up	\$60.00
	Tristis Niobe Weeping Willow	5' & up	\$50.00
<b>TOTAL:</b>			

Tree Total: \_\_\_\_\_

Plantskydd (Repellent)			
Qty	Plantskydd	Cost per item	Repellent Description
	Liquid/ Premixed 1 QT RTU	\$24.95	Best for plants over 2' high. Protects for 2-4 wks during growing season; 3-6 mo. dormant. 32 oz treats approx 100 plants. 
	Liquid/ Premixed 1.3 Gal RTU	\$64.95	
	Granular 1# Shaker	\$12.95	Best for small critters, plants under 2' and border applications. Protects for 6-8 wks during growing season; apply at start of season and before snow. 
	Granular 3.5# Shaker	\$32.95	
	Granular # Shaker	\$59.95	
	Granular 20# Shaker	\$99.95	
	Concentrate 2.2#	\$30	Best for plants over 2' high. Protect for 2-4 weeks - always treat new growth. Protects for 3-6 mo. dormant season. 
	Concentrate 1#	\$50	

Plantskydd Total: \_\_\_\_\_

## FRUIT

Bareroot Berries		
# of	Item:	Price Per Pot
	Raspberry, Caroline	\$8.00
	Strawberry, Allstar / June bearing	\$1.50
<b>TOTAL:</b>		



Fruits Total: \_\_\_\_\_

Specialty Fruit Trees			
QTY	Item:	Tree HT	Price Per Tree
	Apple, Frostbite	4-5'	\$50.00
	Apple, Haralred	4-5'	\$50.00
	Apple, Haralson	4-5'	\$50.00
	Apple, Honeycrisp	4-5'	\$50.00
	Apple, Sweet Sixteen	4-5'	\$50.00
	Cherry, Mesabi (Cherry Pie)	4-5'	\$50.00
	Peach, Contender	4-5'	\$50.00
	Peach, Reliance	4-5'	\$50.00
	Pear, Golden Spice	4-5'	\$50.00
	Pear, Luscious	4-5'	\$55.00
	Pear, Parker	4-5'	\$50.00
	Pear, Patten	4-5'	\$50.00
	Pear, Summercrisp	5-6'	\$55.00
	Plum, Black Ice	5'	\$50.00
	Plum, Toka (need to pollinate)	4-5'	\$50.00
	Plum, Waneta	4-5'	\$50.00
<b>TOTAL:</b>			

## CONIFERS

Conifers \$3.00 Each Bareroot or \$3.25 Each Plug		
QTY	Item:	Bareroot (BR) or Plug (P)
	Cedar, Eastern Red	BR or P
	Juniper, Rocky Mountain	BR
	Larch, Siberian	P
	Pine, Austrian	BR
	Pine, Limber	P
	Pine, Ponderosa	BR or P
	Pine, Scotch	P
	Spruce, Black Hills	P
	Spruce, Colorado	BR or P
	Spruce, Meyer	P
	Spruce, Norway	BR or P
<b>TOTAL:</b>		

Special Orders - Potted Conifers			
QTY	Item:	Size	Price Per Tree
	Black Hills Spruce- 1 gal.	18-24"	\$20.00
	Black Hills Spruce- 5 gal.	24-36"	\$55.00
	Meyer Spruce 2 gal	18-24"	\$35.00
<b>TOTAL:</b>			

Potted Conifers			
QTY	Item:	Tree HT	Price Per Tree
	Cedar, Eastern Red 1 gal.	16-24"	\$25.00
	Fir Douglas 1 gal	16-24"	\$25.00
	Juniper, Rocky Mountain 1 gal.	18-24"	\$25.00
	Larch, Siberian 1 gal.	20-36"	\$25.00
	Pine, Austrian 1 gal.	18-24"	\$25.00
	Pine, Ponderosa 1 gal.	14-24"	\$25.00
	Pine, Scotch 1 gal.	24-36"	\$25.00
	Spruce, Black Hills 1 gal.	14-24"	\$25.00
	Spruce, Colorado 1 gal.	18-24"	\$25.00
	Spruce, Meyer 1 gal.	10-16"	\$25.00
	Spruce, Norway 1 gal.	32-40"	\$25.00
	Pine, Ponderosa 3 gal.	16-30"	\$45.00
	Spruce, Black Hills 3 gal.	24-36"	\$45.00
	Spruce, Colorado 3 gal.	20-36"	\$45.00
<b>TOTAL:</b>			

Conifers Total: \_\_\_\_\_

## PLANT KITS

Live plants will be offered in full tray kits. Each kit will consist of 36 plants. Six plants of six different species and will be priced at \$90 each. Find examples of kits MNL has had great success within the list below. Include as many or as few as you like with your sale. If you'd like to use different names for your kits, feel free to create your own!

Plant Kits - \$95 each	
QTY:	Item:
	<b>Backyard Prairie Kit</b> – An attractive mix of native prairie species for your back yard. Grows well in dry to mesic soils and full sunlight. Heights ranging 36" and up.
	<b>Short &amp; Tidy Kit</b> – A mix of short-statured, well behaved prairie species. Perfect for existing flowerbeds with full sun to partial shade. Up to 36" in height.
	<b>Part-Shade Garden Kit</b> – Designed for areas with 50% or more shade and filtered sunlight under mature trees.
	<b>Rain Garden Kit</b> – Mesic to moist soil species. Perfect for areas of concentrated runoff and occasional inundation.
	<b>Monarch Special Kit</b> – A mix of milkweed varieties to host Monarch caterpillars and fall-blooming nectar favorites for Monarch
	<b>Rusty Patched Bumble Bee Kit</b> – A collection of "superfood" species for our endangered Minnesota State Bee for areas with plenty of sunlight.
	<b>Shoreline Stabilization Kit</b> – Deep-rooted, wet-soil species to help prevent erosion along large bodies of water.
	<b>Woodland Edge Kit</b> – Perfect for areas with a mix of sun and shade along tree lines and at a woodland edge.

Kits Total: \_\_\_\_\_